

# SCAN

M A G A Z I N E

**JO NESBØ: THE SCANDINAVIAN CRIME WAVE CONTINUES**  
TURKU – EUROPEAN CAPITAL OF CULTURE 2011  
**TRAVEL GUIDE TO STOCKHOLM**  
ÅLESUND – ADVENTURE CAPITAL OF THE FJORDS

PROMOTING BRAND SCANDINAVIA ISSUE 28 APRIL 2011



# Cylindra Gallery

– experience the function, beauty and inspiration of Cylindra furniture objects

By Signe Hansen | Photos: Cylindra Gallery

With Norway's beautiful mountains as backdrop, Cylindra objects materialize in the picture almost as a part of a mythical landscape. And in a way they are: many of the pieces are inspired by the stunning wild nature in western Norway and Ålesund in particular.

"*Mountain Peak* - chair, table and cupboard, are inspired by the landscape of this area. They look like sharp, craggy mountain peaks. As with the other pieces in the series, the top of the cupboard represents a majestic range of mountain peaks, which in this case rises up to two metres in height," says its renowned creator Peter Opsvik.

## The gallery

At Cylindra Gallery in Ålesund, visitors can experience not only the objects, but also the landscape they are inspired by. "Even



if these objects are meant for indoor use, I like to bring them out into nature because it creates some very beautiful photos," says Kjellbjørn Tusvik, owner and cabinetmaker, who founded Cylindra Gallery in Ålesund, four years ago. "Peter and I have been working together for almost 23 years now - the best period of my life. Not everybody gets the chance to

work with the most famous designer in Scandinavia, so I feel very privileged," says Tusvik, who also owns Cylindra workshop and gallery in the village of Tusvik, where the objects are made. At the 100-year-old workshop, inherited by Tusvik from his grandfather, cabinets and other objects designed by Opsvik are handcrafted in solid wood by skilled workers. And with the beautiful setting between the mountains and the fjord, Tusvik says "inspiration comes easily".

## From barrel to furniture

Cylindra was founded to produce the wooden barrel inspired furniture by Peter Opsvik in 1989. The idea for the unique design came about when Opsvik was experimenting with the cylindrical shape in the beginning of the 1980s. "When I worked in graphic art and paintings on paper or canvas with only two dimensions, I often

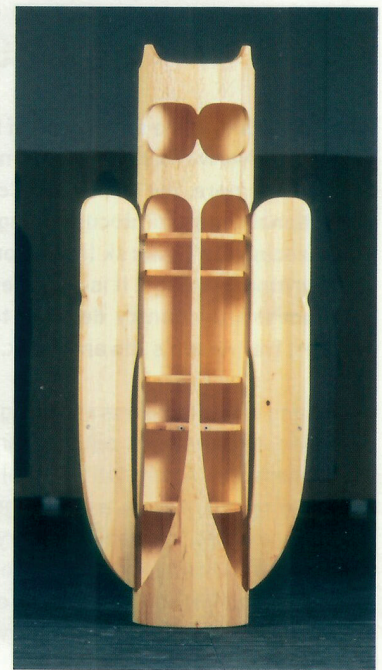
wished to have a basic form which could be shaped freely and yet be functional," says the artist. "The solid wood-cylinder made my wish come true. If we roll up a sheet of paper or a canvas, we get a cylinder. The surface has no end horizontally, only vertically."

In 1984, Opsvik's desire was fulfilled when a Norwegian barrel maker contacted him about a furniture venture. Instead of using the barrel shape, Opsvik crafted the straight cylinders that are still the foundation for his playful, slightly provoking, yet functional designs. "Most of the things we surround ourselves with, should be designed for use. But in a hall, for instance, where you sit down and tie your shoelaces every day, you don't need an ergonomic chair. It is more important that this chair bids you welcome home, like the *Embrace* chair," stresses Opsvik.

In 1989, Opsvik teamed up with Tusvik and the development of 30 objects, such as chairs, tables, cupboards and wardrobes, started. Today the cylindrical furniture's combination of artistic expression and practical function is renowned all over the world, with objects exhibited at museums and art shows in cities such as Chicago, New York and London.

### An extraordinary experience

At both the gallery in Ålesund and Tusvik, visitors can buy many of the pieces on exhibition, for instance the *Two Servants* - a wardrobe that consists of two vertical boards, taking the form of the human body. But the galleries are not just about buying objects, stresses Kjellbjorn Tusvik: "We have always had a dream about having our own galleries. A place where we could meet people with an interest in our furniture objects, listen to their opinions and test our theories on how to work with our pieces. You see, working with objects that are both art and furniture is something special. We are not offering just an object; we are also selling a story." Another popular item for tourists to bring back home is the *Keybox*, a unique piece which you can use for hiding your keys or just as an eye-catcher on the wall.



To complement the stories of the furniture objects, Tusvik arranges many different happenings at the workshop and gallery. On 1 April, the gallery has a retro dinner party with live music for 120 guests, and later in the year a jazz concert with Peter Opsvik, who is also a jazz musician, will take off. "Combining a tour around my

workshop with short mountain hikes, live music and dinner at the gallery has also been very popular," says the gallery owner. So whether you are looking for a new unique furniture object, an inspirational art exhibition or a different evening out, Cylindra Gallery might be just the place.



Cylindra Gallery in Ålesund is open  
Monday - Friday 9am - 6pm and  
Saturday - Sunday 12 - 4pm

Cylindra workshop and gallery  
in Tusvik is open  
Monday - Friday 10 am - 4pm

For more information, please visit:  
[www.cylindra.net](http://www.cylindra.net) or [www.cylindra.no](http://www.cylindra.no)